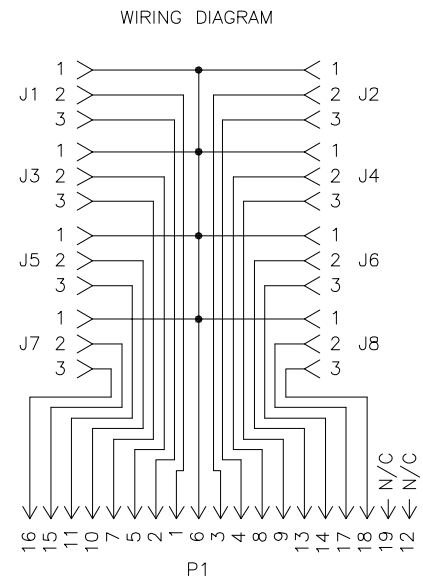
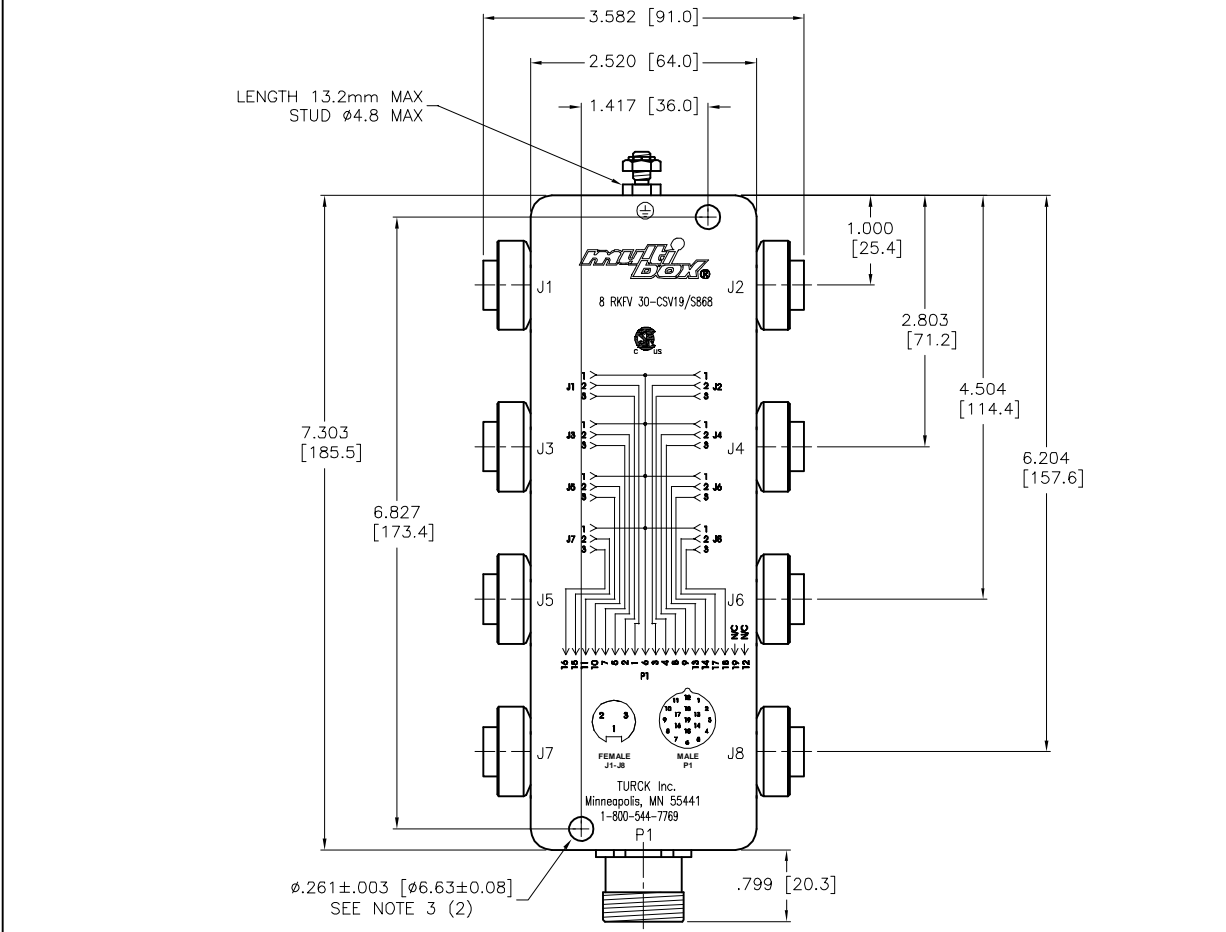
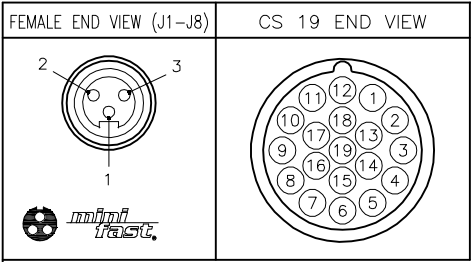


SPECIFICATIONS	
HOUSING MATERIAL	ALUMINUM ALLOY
HOUSING FINISH/COLOR	POWDER COATED/BLACK
RECEPTACLE HOUSING MATERIAL/FINISH	STAINLESS STEEL/PASSIVATED
CONTACT CARRIERS	TPU
CONTACT MATERIAL/PLATING	BRASS/GOLD
OPERATING CURRENT	2.0 A
OPERATING VOLTAGE	150 V
PROTECTION CLASS to DIN 40050	IP67 – ONLY WHEN ALL RECEPTACLES ARE COVERED WITH PLUGS OR CONNECTED
OPERATING TEMPERATURE	–30°C to 105°C (–22°F to 221°F)



- NOTES
- USE MATING CORDSET CKM 19–17–*/S867.
 - BOX HEIGHT = 1.36 [34.5] NOMINAL.
 - CLEARANCE HOLE FOR 1/4–20 MOUNTING SCREWS (NOT INCLUDED).
 - "/S868 DESIGNATES SPECIAL PIN–OUT PER CUSTOMER REQUIREMENT.
 - PACKAGING TO INCLUDE EIGHT (8) DUST COVERS (P/N 10130106).

SOURCE DRAWING – FOR REFERENCE ONLY

RELATED DOCUMENTS				3RD ANGLE PROJECTION		THIS DRAWING IS CONFIDENTIAL AND THE PROPERTY OF TURCK INC. USE OF THIS DOCUMENT WITHOUT WRITTEN PERMISSION IS PROHIBITED.		3000 CAMPUS DRIVE MINNEAPOLIS, MN 55441 1–800–544–7769 (763) 553–7300 (763) 553–0708 fax www.turck.us	
1. 2. 3. 4.				ALL DIMENSIONS DISPLAYED ON THIS DRAWING ARE FOR REFERENCE ONLY		DRFT RDS APVD		DATE 04/20/05 SCALE NTS	
MATERIAL				UNIT OF MEASUREMENT INCH [MILLIMETER]		DESCRIPTION 8 RKV 30–CSV19/S868		IDENTIFICATION NO. U2–03955	
FINISH				CONTACT TURCK FOR MORE INFORMATION		DO NOT SCALE THIS DRAWING		REV C	
C UPDATE DIM & SPECS				NF 09/03/21		77003		FILE: U2–03955	
REV DESCRIPTION				BY DATE		ECO NO.		SHEET 1 OF 1	